



FOR LEASE – OFFICE SPACE

2296 Rockbrook Drive
Lewisville, TX

LOCATION:

Situated just blocks West of I-35 and minutes from State Hwy 121. Easy access to FM-3040 (Round Grove Road.)

SIZE:

- 5,100 RSF

RATE:

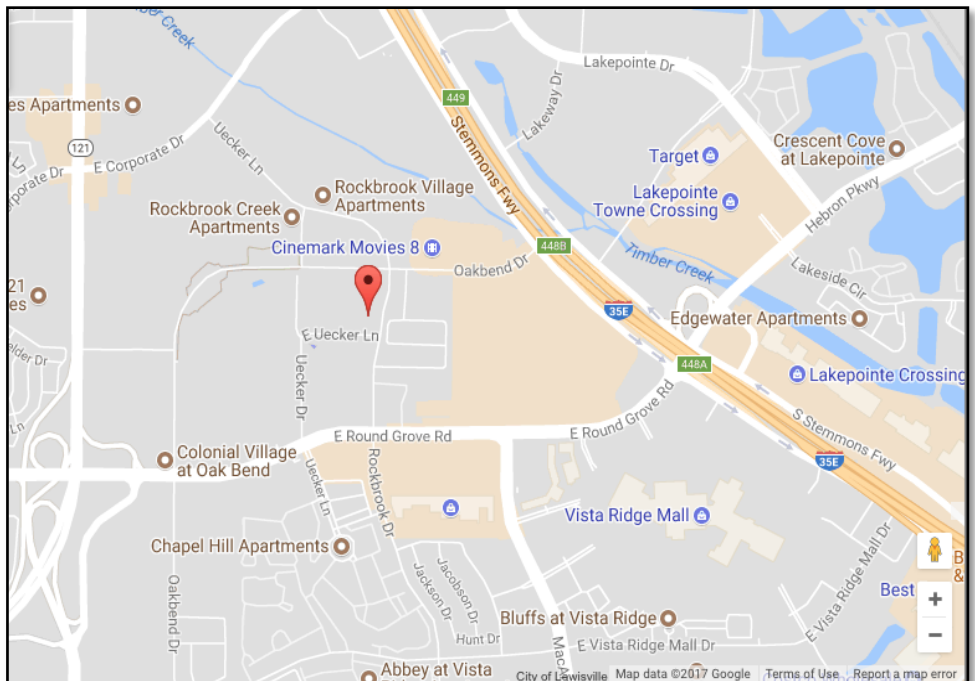
- See Broker for Pricing

ABOUT THIS SPACE:

- Second generation finished office space
- Individual offices and a large open area
- Elevator for easy 2nd floor access
- Balcony and a 2nd floor patio overlooking a nice, grassy area
- Parking @ 3/1,000 RSF

AVAILABLE:

Immediately



FOR INFORMATION:

Phyllis Garcia: Phyllis@BridgeRealtyTexas.com
www.BridgeRealtyTexas.com | 972.899.1851
400 Parker Square, Suite 270H | Flower Mound, TX 75028

This information is believed to be accurate, but no representation or warranty, express or implied, as to its accuracy or completeness is made by any party. The presentation of this property is submitted subject to errors, omissions, change of price or prior sale or lease, or withdrawal without notice.



FOR LEASE – OFFICE SPACE
2296 Rockbrook Drive
Lewisville, TX



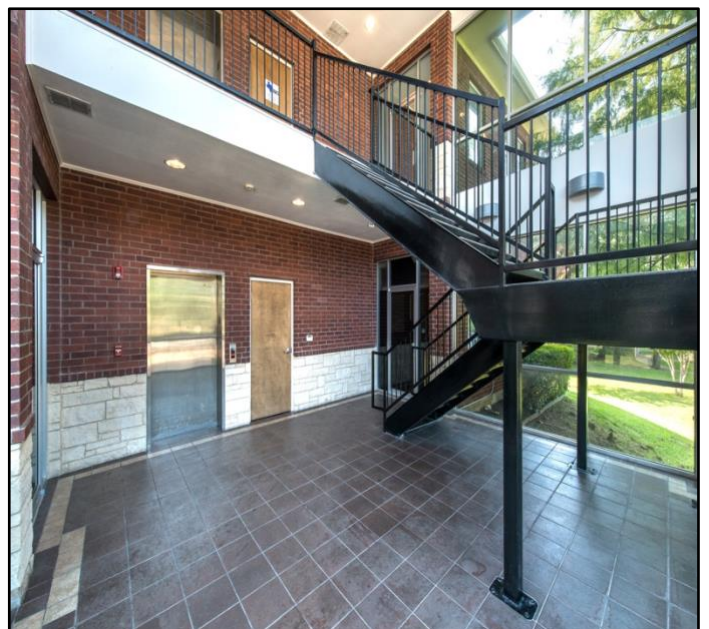
Front Elevation



Back of Building with Balcony

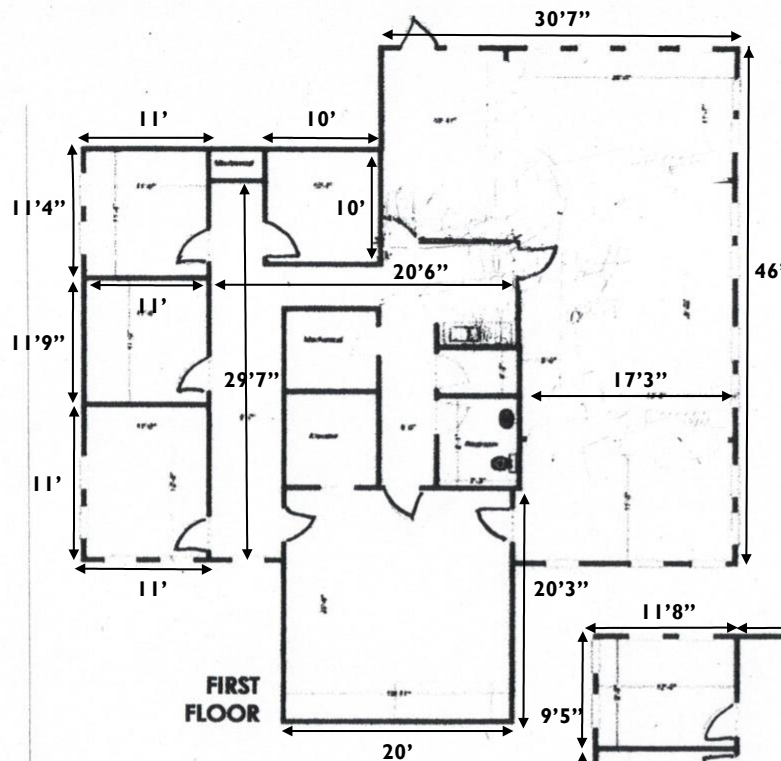


Interior Lobby



FLOOR PLAN

2296 Rockbrook Drive
Lewisville, TX



2296 ROCKBROOK DRIVE

1ST Floor & 2ND Floor Layouts

