



FOR LEASE – GENERAL OFFICE SPACE

4305 Windsor Centre Trail, Suite 100
Flower Mound, TX

ABOUT:

This office space features an upscale finish-out including custom granite countertops, 10' high ceilings and wood trim. The space includes five offices and a conference room.

SIZE:

➤ 1,588 RSF

LEASE RATE:

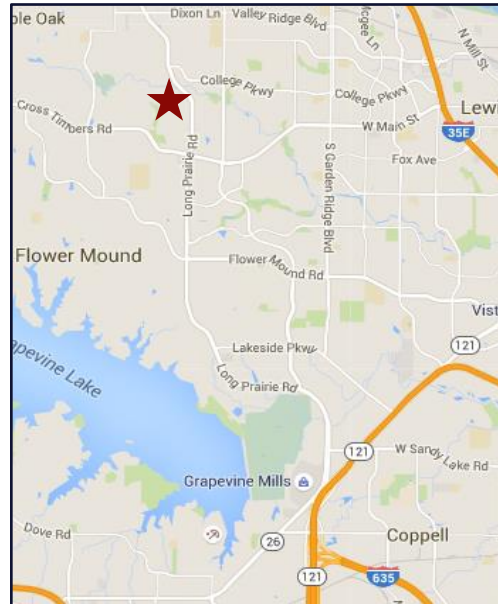
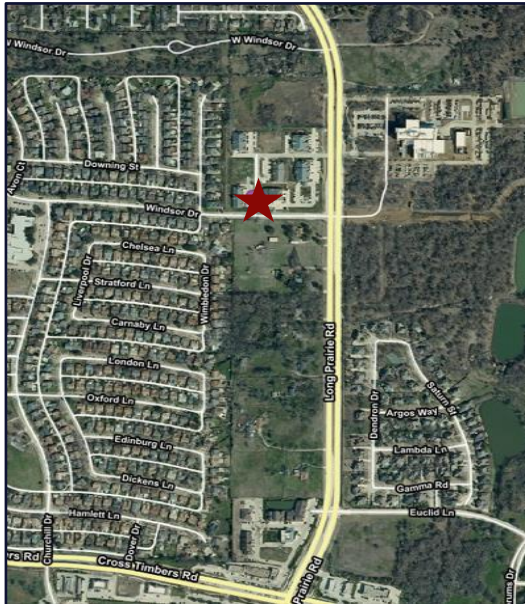
\$16.50/SF Base + NNNs +
Electric and Janitorial

HIGHLIGHTS:

- Located at FM-2499 (Long Prairie Road) and Windsor Drive
- Located across the street from Texas Health Presbyterian Hospital

AVAILABLE:

Immediately



FOR INFORMATION:

Phyllis Garcia

972.899.1851 | Phyllis@BridgeRealtyTexas.com

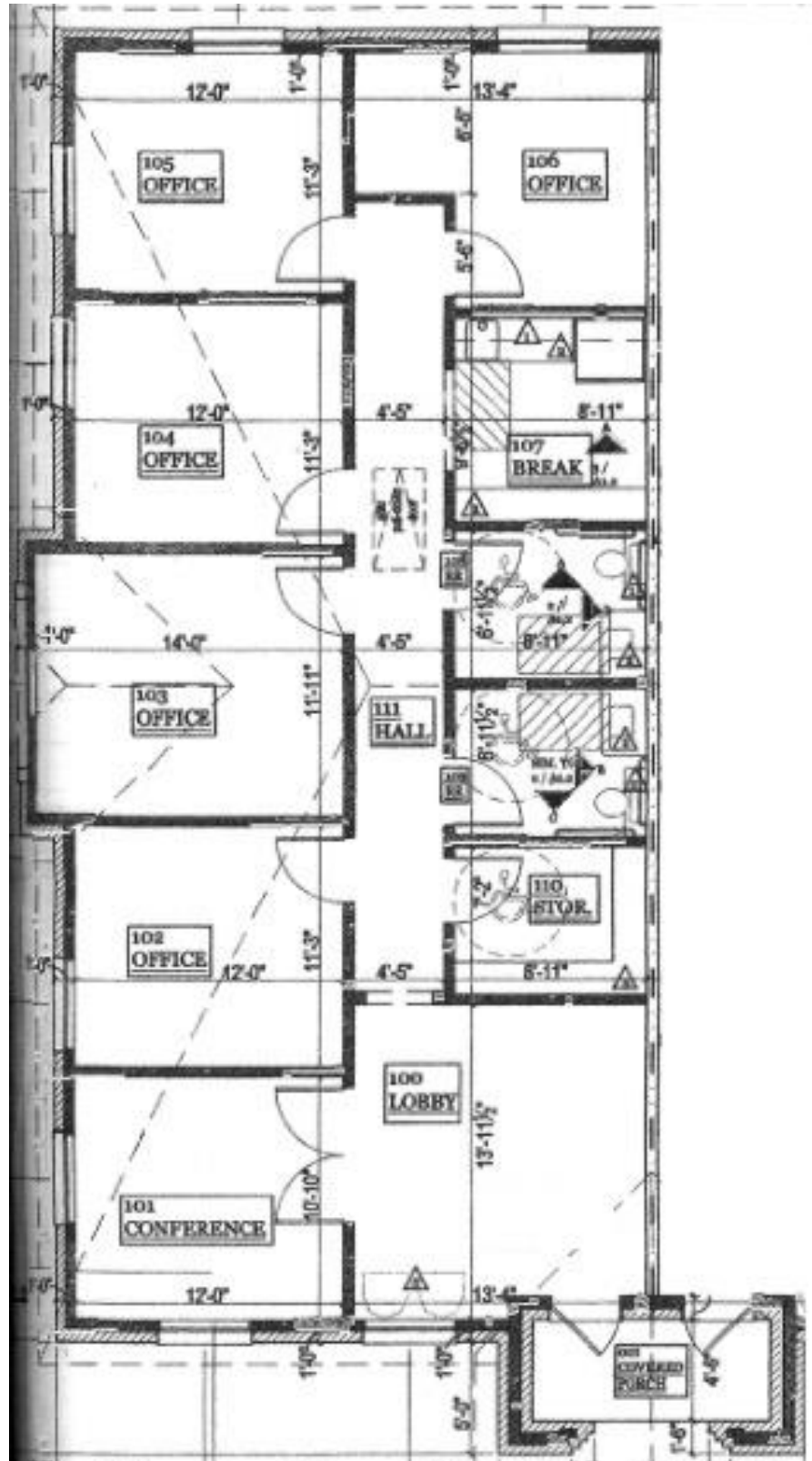
www.BridgeRealtyTexas.com

400 Parker Square, Suite 270H | Flower Mound, TX 75028



FLOOR PLAN

4305 Windsor Centre Trail, Suite 100
1,588 RSF





INTERIOR PICTURES

4305 Windsor Centre Trail, Suite 100
1,588 RSF

