



FOR LEASE – RETAIL/OFFICE SPACE

400 Parker Square
Flower Mound, TX

LOCATION:

Parker Square is centrally located in the heart of Flower Mound, off FM-1171 (Cross Timbers Road). Patrons also have easy access to I-35E and FM-2499 (Long Prairie Road).

AVAILABLE SPACES:

First Floor – Retail/Office:

- Suite 420 – 4,000 RSF
- Suite 440 – 6,077 RSF

Second Floor – Office:

- Executive Suites – 185 – 448 RSF
- Suite 245 – 2,356 RSF
- Suite 275 – 2,576 RSF

LEASE RATE:

First Floor – Retail/Office:

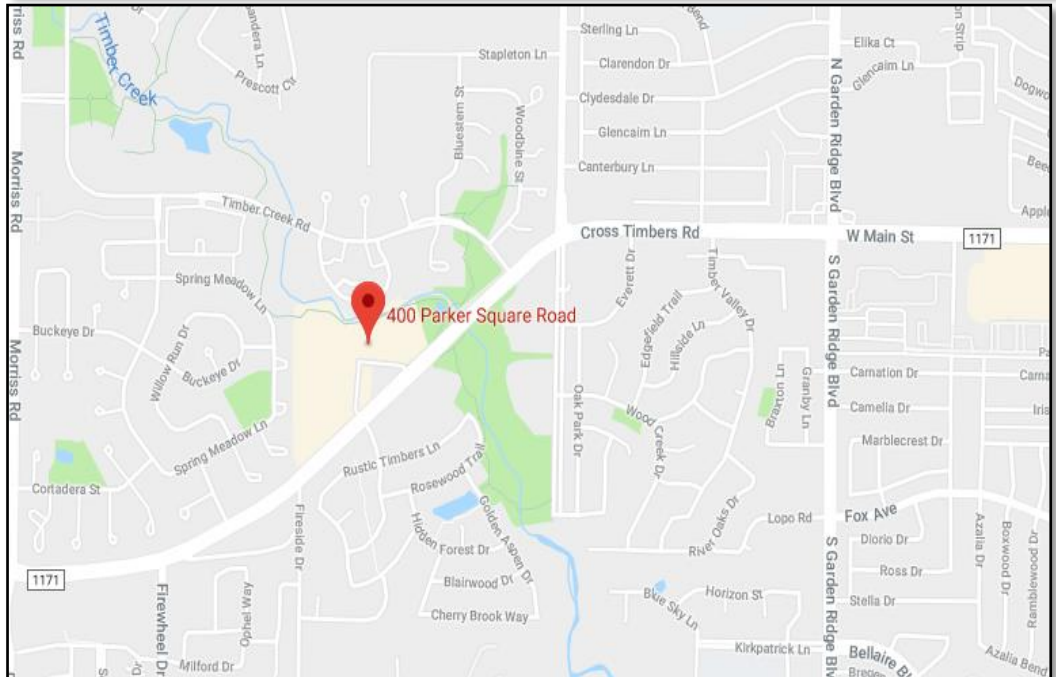
- \$17-\$19/SF Base + NNNs (\$6/SF)

Second Floor – Office:

- Executive Suites - See Broker for Availability and Pricing
- Suite 245/275 - \$15/SF Base + NNNs (\$6/SF)

HIGHLIGHTS:

- Beautiful setting, resembling European-style square with an old-world charm
- Surrounded by residential neighborhoods



FOR INFORMATION:

Phyllis Garcia

972.899.1851 | Phyllis@BridgeRealtyTexas.com

www.BridgeRealtyTexas.com

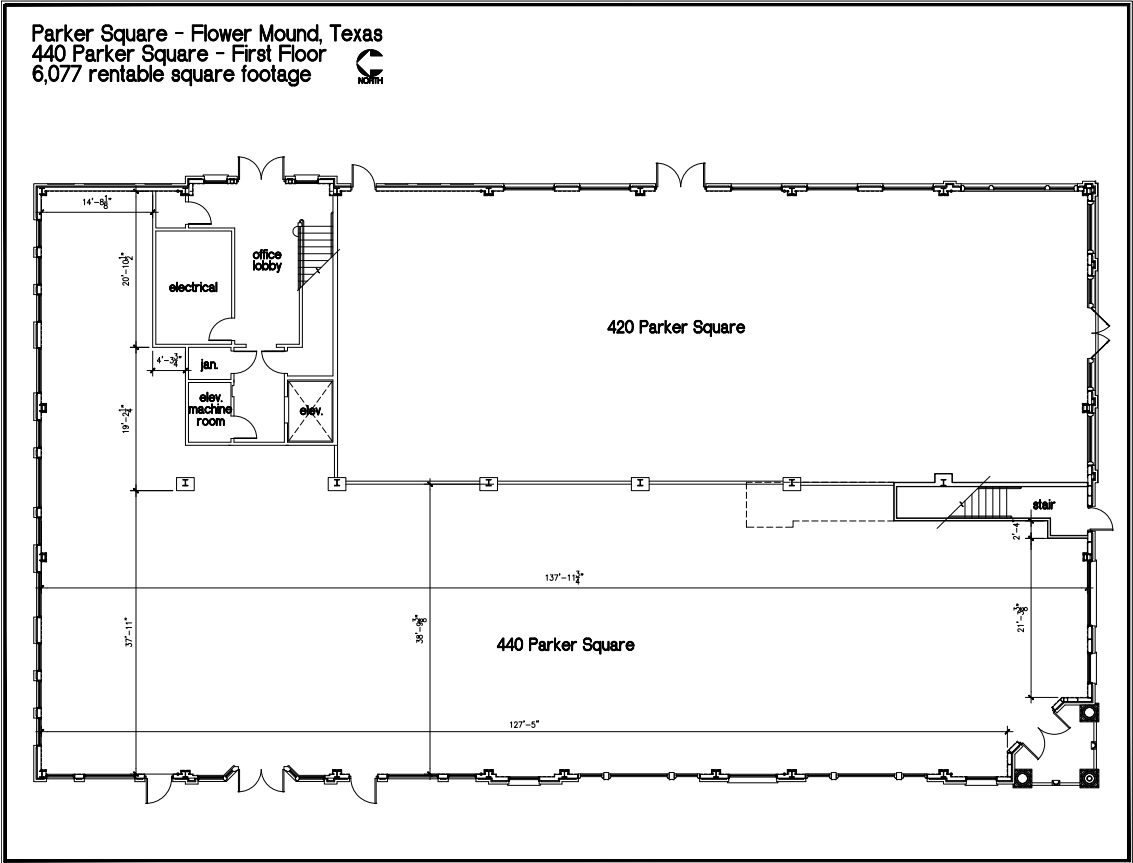
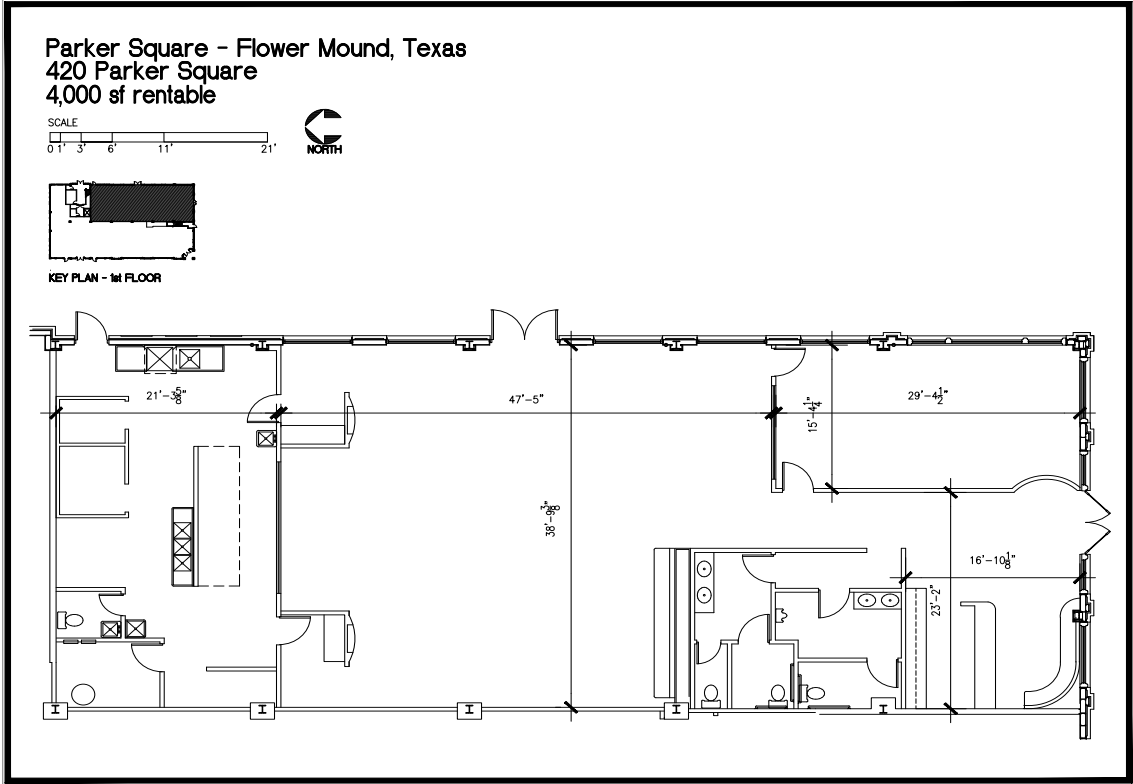
400 Parker Square, Suite 270H | Flower Mound, TX 75028

This information is believed to be accurate, but no representation or warranty, express or implied, as to its accuracy or completeness is made by any party. The presentation of this property is submitted subject to errors, omissions, change of price or prior sale or lease, or withdrawal without notice.



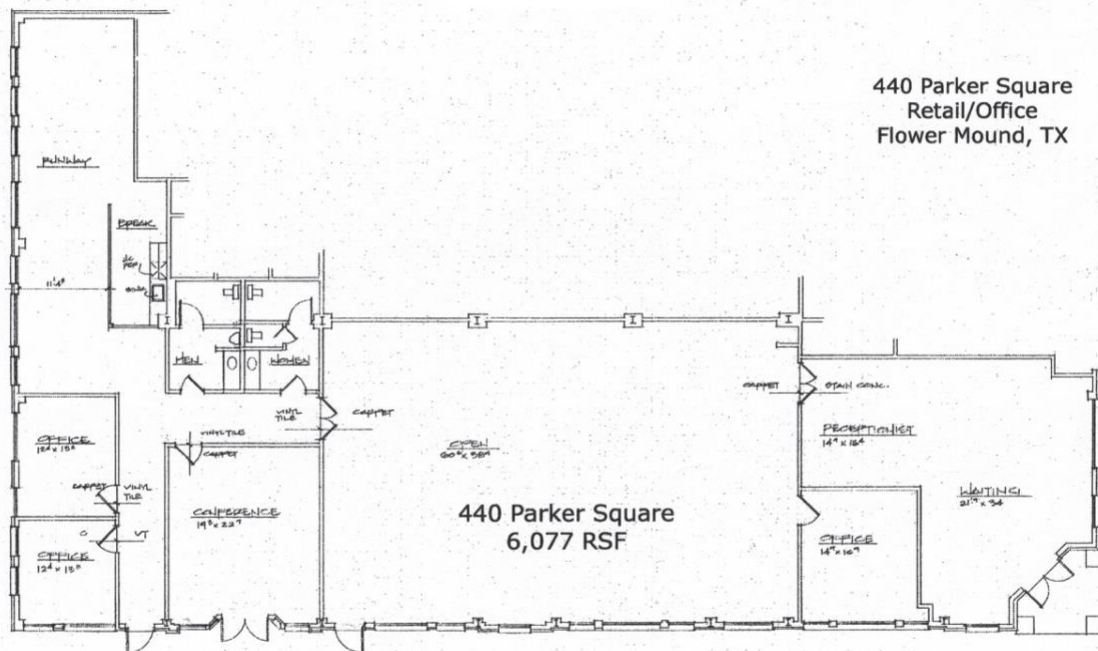
FLOOR PLANS

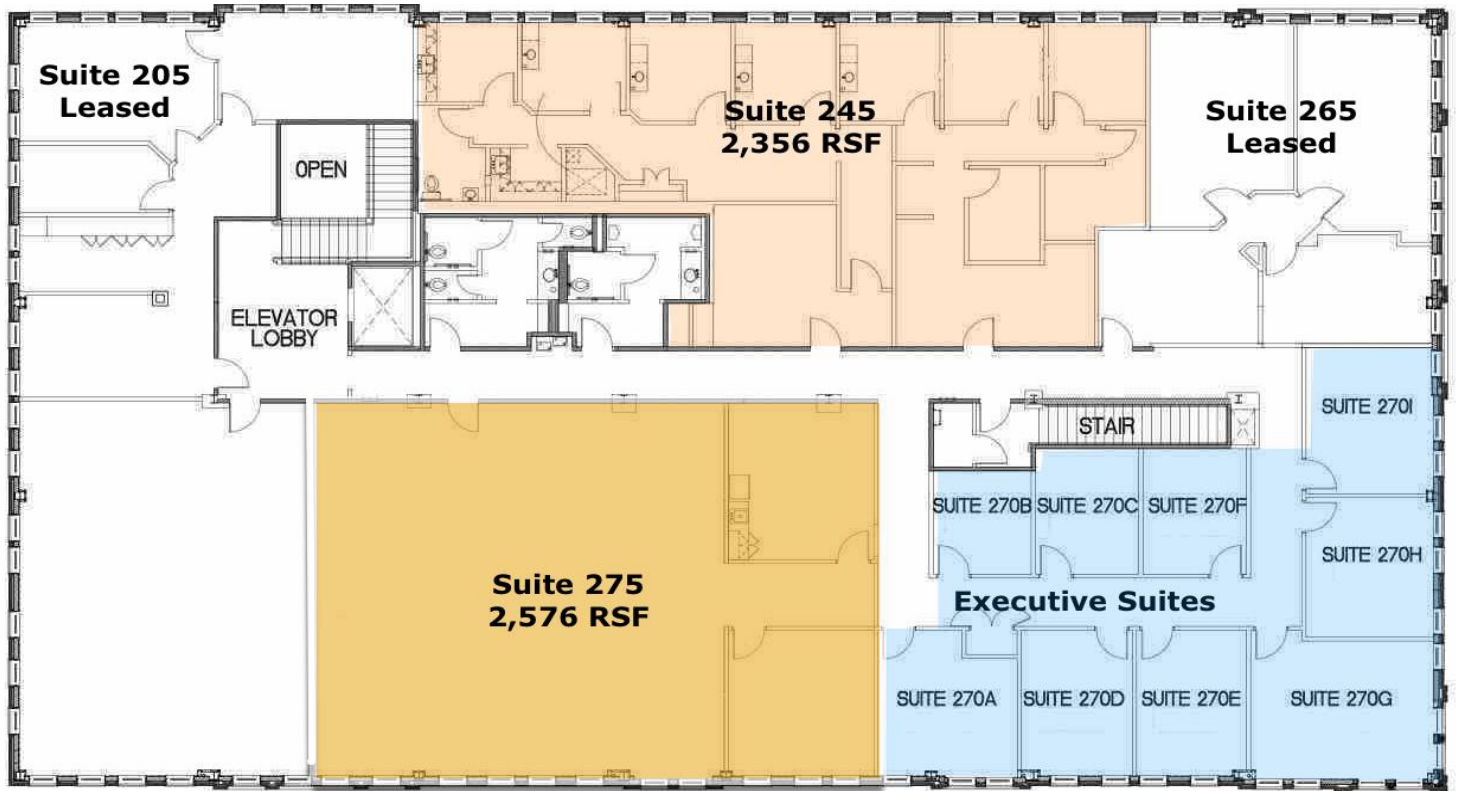
400 Parker Square Flower Mound, TX



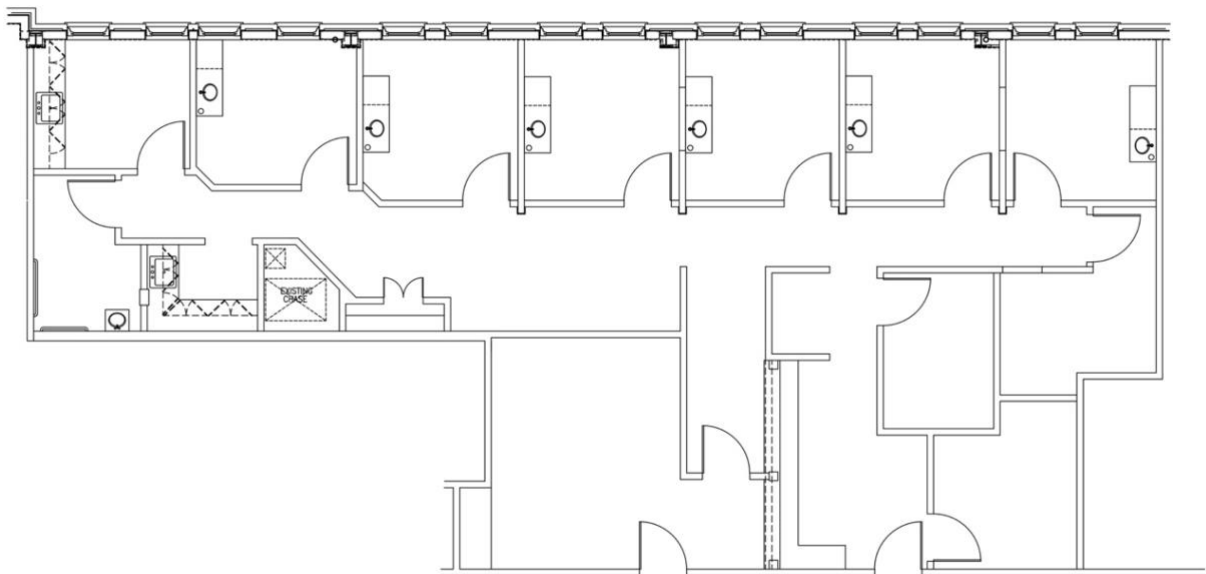
Current Floor Plan

440 Parker Square
Retail/Office
Flower Mound, TX





**400 Parker Square, Suite 245
2,356 RSF**





PHOTOS

440 Parker Square
Flower Mound, TX



SITE PLAN

Parker Square
Flower Mound, TX

