



FOR LEASE – 2nd Generation Massage Therapy Spa or Office Space

950 Parker Square
Flower Mound, TX

LOCATION:

Parker Square is centrally located in the heart of Flower Mound, off FM-1171 (Cross Timbers Road). Patrons also have easy access to both I-35E and FM-2499 (Long Prairie Road). Parker Square offers a beautiful setting, resembling European-style square with an old-world charm.

SIZE:

- 3,192 RSF
- The space can be demised to 1,733 RSF and 1,459 RSF (See Conceptual Floor Plan)

LEASE RATE:

\$17/SF - \$19/SF Base +
NNNs (\$6/SF)

HIGHLIGHTS of SPACE:

- 2nd Generation Massage Therapy Spa
- Large Open Reception Area, with Adjacent Office
- 11 Private Rooms and Breakroom
- 2 Private Restrooms with Showers
- Recently Remodeled
- Diverse Mix of Other Tenants
- Available for Immediate Occupancy



FOR INFORMATION:

Phyllis Garcia

972.899.1851 | Phyllis@BridgeRealtyTexas.com

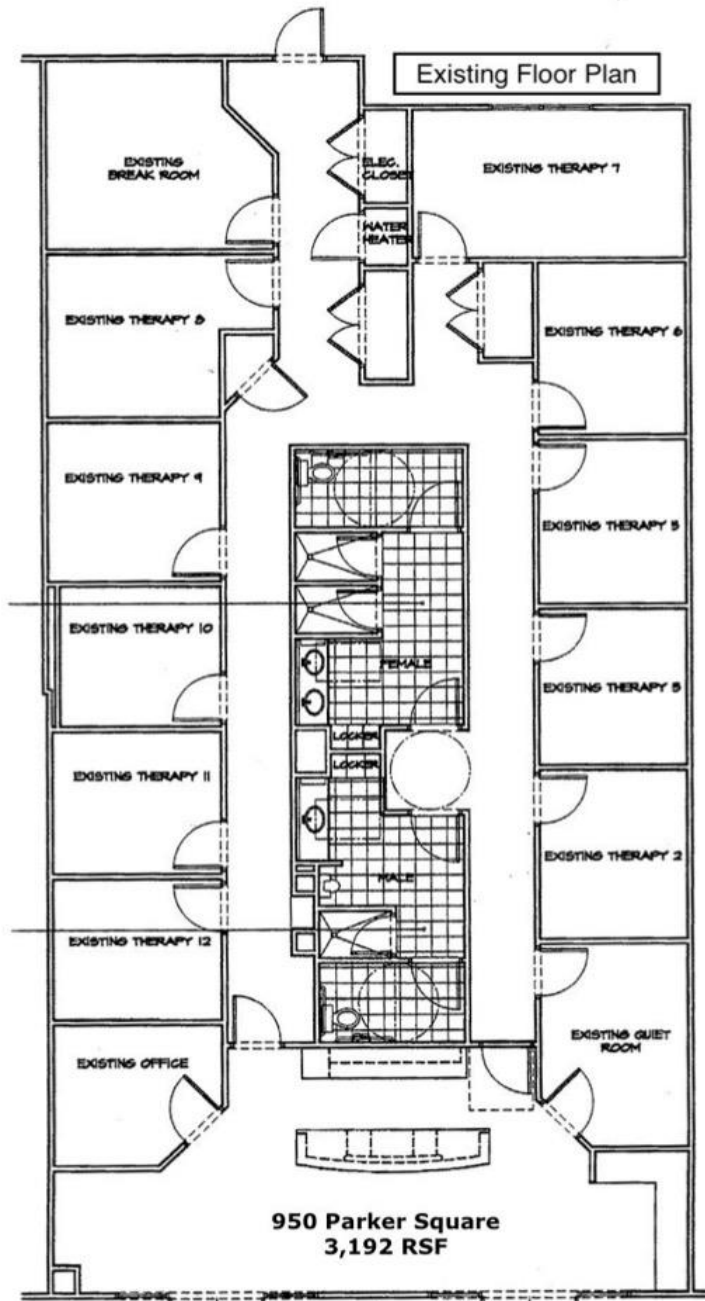
www.BridgeRealtyTexas.com

800 Parker Square, Suite 285C | Flower Mound, TX 75028



FLOOR PLAN - EXISTING

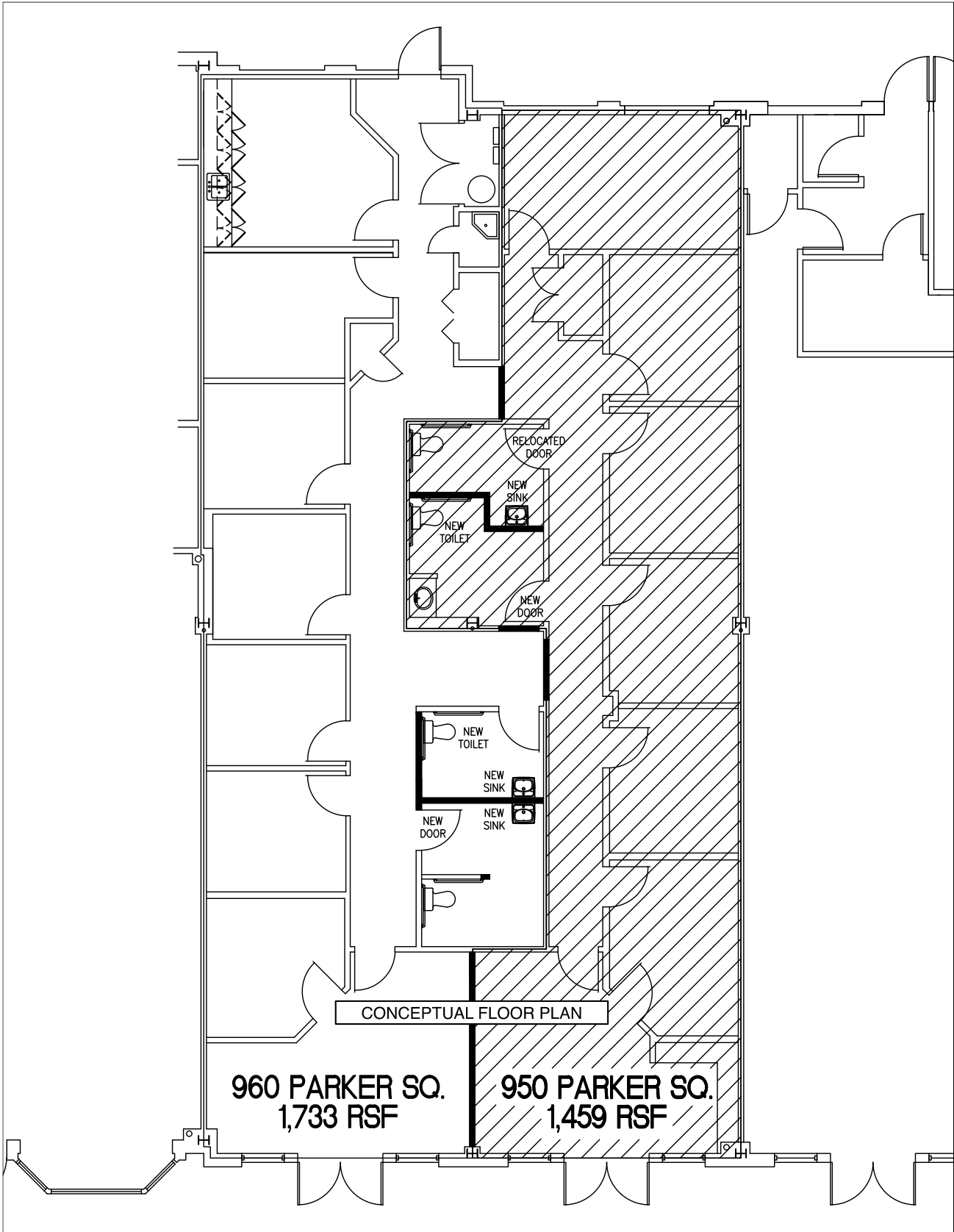
950 Parker Square
Flower Mound, TX





FLOOR PLAN - CONCEPTUAL

950 Parker Square
Flower Mound, TX





SITE PLAN/PHOTOS

950 Parker Square
Flower Mound, TX

